



An investment in knowledge pays the best interest.
- Benjamin Franklin



**EXCEPTIONAL EDUCATION
OUTREACH BAHAMAS**
BRINGING NEW OPPORTUNITIES TO CHILDREN
AND COMMUNITIES IN THE BAHAMIAN FAMILY ISLANDS

2020-2021
Impact Report

Exceptional Education Outreach (EEO) is a non-profit special education and literacy program that operates in the Bahamian Family Islands. EEO's mission is to partner with the Bahamian Ministry of Education to create a sustainable special education program for children across Eleuthera and Harbour Island.



www.eeobahamas.org

OVER THE LAST 20 YEARS, EEO HAS COLLABORATED WITH THE BAHAMIAN MINISTRY OF EDUCATION AND SPECIAL EDUCATION SERVICES IN NASSAU TO CREATE A SUSTAINABLE SPECIAL EDUCATION PROGRAM FOR THE FAMILY ISLANDS.



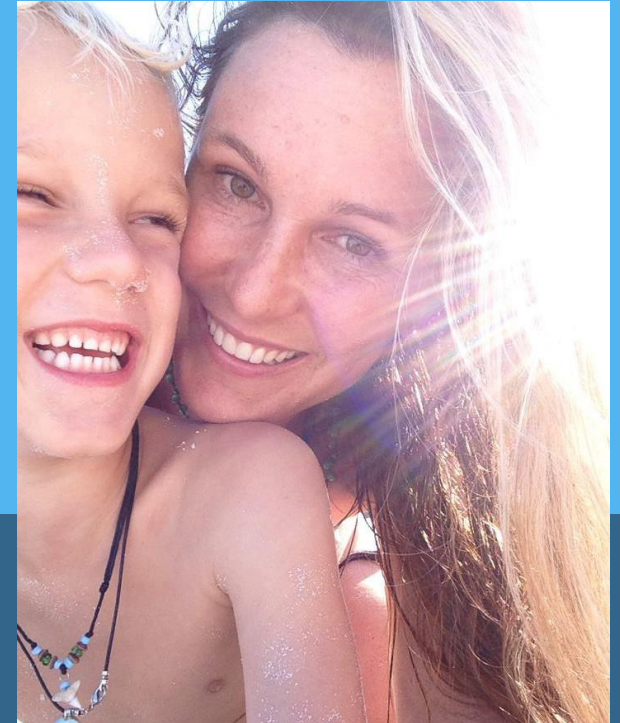
Letter from the Founder

Twenty years ago I started EEO because children with learning difficulties living on Harbour Island and Eleuthera needed access to literacy interventions so they could reach their full potential.

Because of our strong donor, teacher, and parent community that vision is now a reality. Over the past **20 years**, we have built **6 centers** located within the local schools. We are now serving over **240 students** per year with **8 specially trained teachers**. This is only possible because of our incredible board members, donors, teachers, volunteers, and parents who have helped me nurture EEO and ensure the vision was achieved, Thank you!

This year was especially challenging. Our students were impacted greatly by the pandemic. Our teachers were incredible. They were able to pivot quickly and continue to provide remediation virtually. They are now working diligently to help students make up for many lost months of limited virtual instruction.

The success of EEO would not be possible without our teachers and my Co-Director, Gaby Hudson. We know the future is bright for our students and together we can create a sustainable special education program for the children of the Islands we all love so much.



Lang Hudepohl

Areas of Impact

DAILY IN-SCHOOL LITERACY INSTRUCTION

In partnership with The Bahamian Ministry of Education, EEO teachers provide reading interventions and remediation to over 240 students across our 6 centers on Harbour Island and Eleuthera.

PROFESSIONAL DEVELOPMENT AND PARENT TRAINING

EEO provides training to our own teachers and parents in addition to teachers throughout the Family Islands. Topics range from new reading strategies, writing workshops, learning games, and also parenting strategies. Everyone--teachers, parents, caregivers, and the community at large--is invited to attend.

PROFESSIONAL MEDICAL CARE

All students in the EEO program, as well as others with possible concerns, have their ears screened for hearing deficiencies. Other assessments if needed include neurological evaluations (and EEG if needed), vision screenings, psychological evaluations, testing by Occupational and Physical Therapists.

By the numbers

240+ Students served annually

8 Teachers

6 Resource Centers

120 Children received vision and hearing exams in 2020

25 Students mainstreamed in 2020

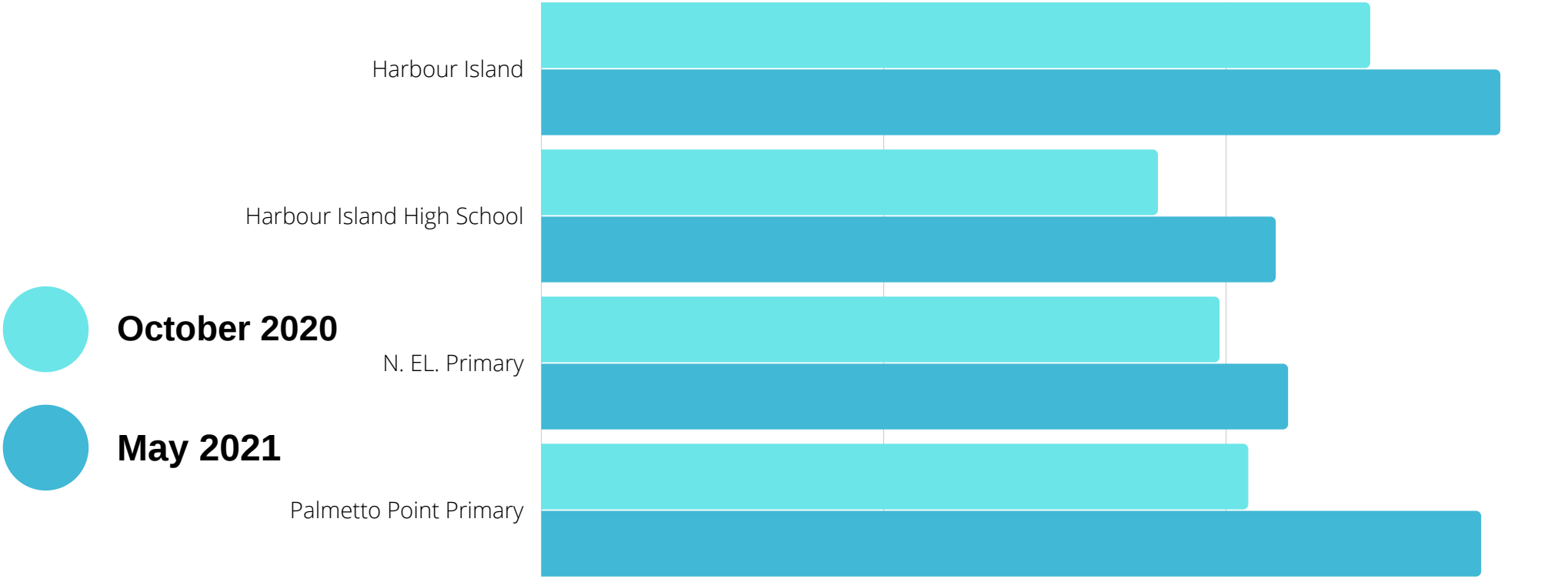
438 students mainstreamed since 2007



Progress Chart

The chart indicates the growth and progress made by the children served by EEO during the 2020-2021 school year. This past year was a challenging year due to a delayed start to the school year due to COVID-19. Data from Gov. Harbour Primary and Hatched Bay Primary is not available due to this year's distance learning.

Not all children were represented because this is a reading assessment that does not apply to the more severely delayed EEO students. Those children with more severe impairments that were not applicable for this assessment have been given more in-depth assessments by members of the interdisciplinary team (Pediatric Neurologist, Speech Therapist, Occupational Therapist).



Where are they now?



JONATHAN WELLS

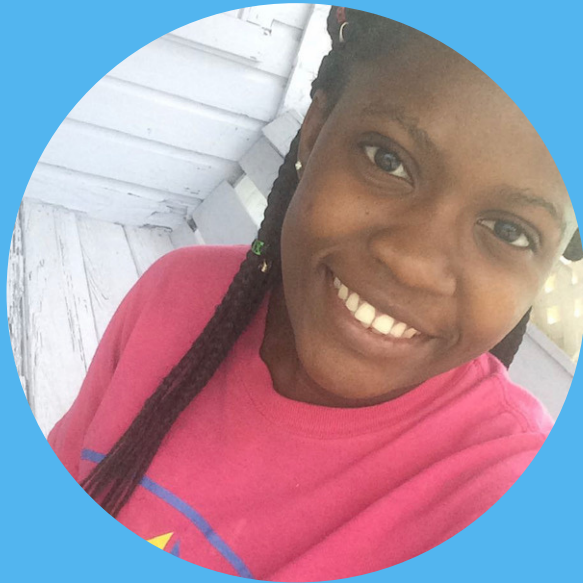
“EEO was a huge part of my success and confidence. I am currently working as Head Hospitality Manager at Valentines Resort and, according to my reviews, a 5 -Star Service Rockstar!”



PETER HIGGS

Peter Higgs is the owner of a very successful landscaping company named Hibiscus Landscaping which services homes and hotels on Harbour Island. Peter also started a restaurant takeaway called Peter Pan.

Where are they now?



BENITA ENTIENNE

Benita was failing in school and had plummeting self-esteem. During one of our annual hearing screenings, EEO discovered a severe hearing loss that was the root of her problems. She now is working at Arthurs Bakery and in process of getting her online degree.



FREDRICK HIGGS

Fredrick has gone on to become a pilot and also trains other pilots to help them soar.

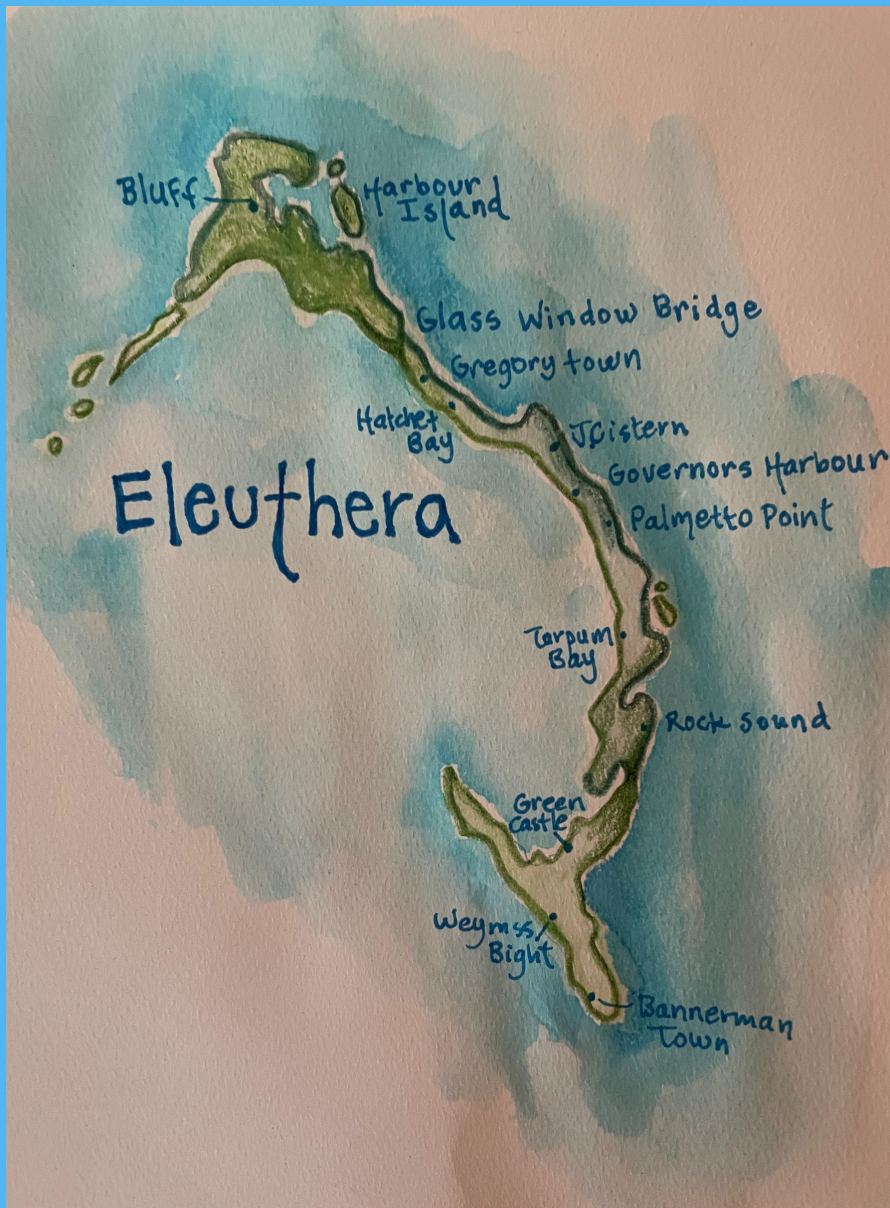
Meet Rosie

At age 9, Rosie believed she would never learn to read due to severe learning difficulties. In the last year, since receiving intensive intervention from EEO at Harbour Island All-Age School, Rosie is now attending school for the first time in her life.

In addition to vision, hearing, and medical support, Rosie's parents have benefited from EEO parent workshops and support so they can help Rosie meet her personal and educational potential.



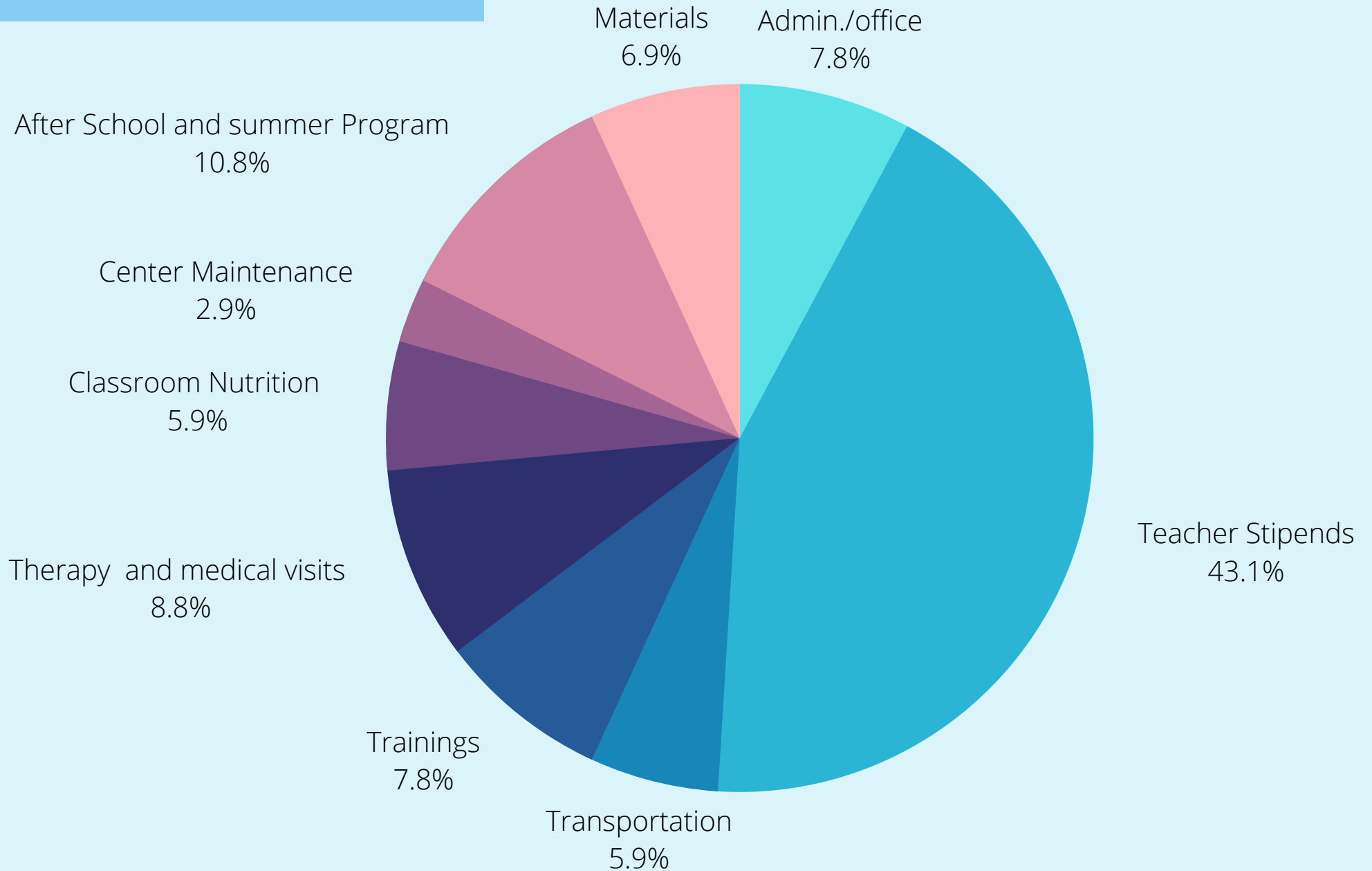
Beacuse of your support, Rosie's future is bright.



Since 2000, EEO served students in the following schools:

- ❖ Gregory Town Primary School
- ❖ North Eleuthera Primary School (Bluff)
- ❖ Harbour Island All Age School (High School and Primary)
- ❖ James Cistern Primary School
- ❖ Rock Sound Primary School
- ❖ Emily G. Petty Primary School (Governors Harbour)
- ❖ Emma Cooper Primary School (Palmetto Point)
- ❖ PA Gibson Primary School (Hatchet Bay)
- ❖ Tarpum Bay Primary School
- ❖ Weymss Bight Primary School
- ❖ Guy Pinder All Age School
- ❖ Other Private schools on Harbour Island and Eleuthera
- ❖ Centre for Exceptional Learners, Governors Harbour*
(*Staffed by Ministry of Education)

2020-2021 Budget



Ways to Give

GIVE THE GIFT OF EDUCATION

Monetary donations and multi-year commitments help us continue our daily in-person literacy instruction, expand our vision and hearing screenings, maintain our existing centers, and professionally train and retain teachers.

HELP US EXPAND

Our vision for the islands is to ensure that children with special needs have access to innovative educational programs. In order to achieve this, we need the resources to expand our services to all of the Family Islands.

ADD US ON SMILE

You can bring a smile to our student's faces by adding EEO as your preferred charity on Amazon Smile.

**FOR MORE INFORMATION OR WAYS TO SUPPORT OUR WORK PLEASE VISIT
EEOBAHAMAS.ORG**

WHAT OUR SUPPORTERS MAKE POSSIBLE



Hearing and Vision Screenings



Comprehensive assessments to diagnose and pinpoint learning challenges

3-5 days a week of individualized and small group intervention support

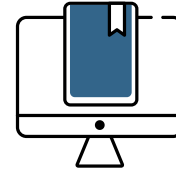


School supplies and materials



Speech, OT, PT, or other support services

Learn More



Website

www.EEOBahamas.org



@eobahamas



Email / Tel.

EEO@EEOBahamas.org
(305) 389-7485

Thank you for investing in EEO
and the future of the children of
Harbour Island and Eleuthera.



Address

650 NE 67 Street
Miami, Florida 33138